

NOURISON
AT FORTY SEE WHAT'S NEXT

NEW INTROS

2020 BROADLOOM

INTRODUCING **CRAFTWORKS** & FEATURING NEW STYLES FROM Nourtex



COLLECTIONS

CRAFTWORKS

- 4 CORD LUSTER
- 5 HIGHLANDS
- 6 ISLAND
- 10 RADIANT STRIPE
- 11 RAVISHING STRIPE
- 12 TERRAIN
- 13 VENTURA
- 14 WHEREVER

NOURISON

- 17 GRAND PARTERRE
- 20 ROCKVILLE
- 21 STARLIGHT

NOURTEX

- 23 ESTATE 2
- 29 PACIFIC
- 30 TIDAL



NOURISON
AT FORTY SEE WHAT'S NEXT

Nourison is starting 2020 off with a bundle of new, on-trend styles. Explore new 15' wide, hand-crafted styles, and stylish indoor/outdoor designs. Enjoy!

Nourison

Photos and images in this catalog are for reference only; actual colors and textures may vary. Rugs shown are of specific size; design details may vary with size changes.



CRAFTWORKS
BY Nourison

TERRAIN
COLLECTION

NEW COLORS ADDED!
PAGE: 12

OUR PICK
+
our favorite new
Craftworks style

CORD LUSTER

CRAFTWORKS
BY *Nourison*



100% Polysilk



Hand-Loomed



15' Width



Residential



CORD LUSTER | MUSHROOM



CORD LUSTER | LAGOON



HIGHLANDS

CRAFTWORKS
BY Nourison



55% Wool
45% Nylon



Hand-Loomed



15' Width



Residential -
Commercial



HIGHLANDS | PLATEAU



HIGHLANDS | CANYON



ISLAND

ISLAND GRID

CRAFTWORKS
BY *Nourison*



50% Wool
50% Polyester



Hand-Loomed



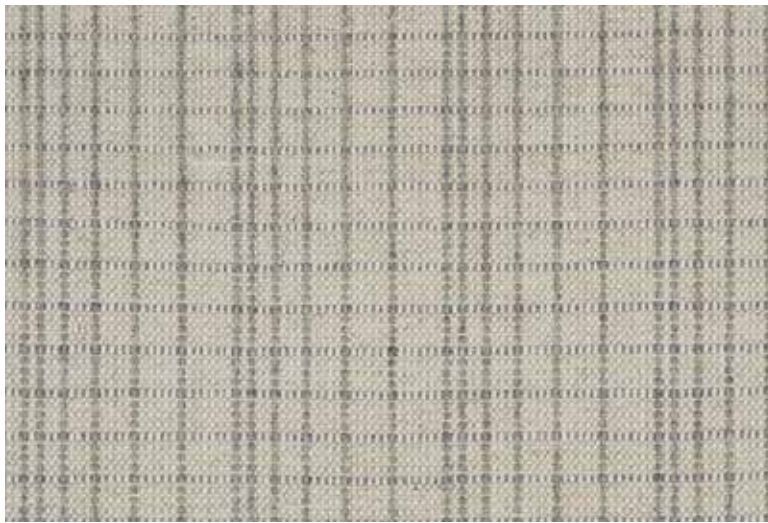
15' Width



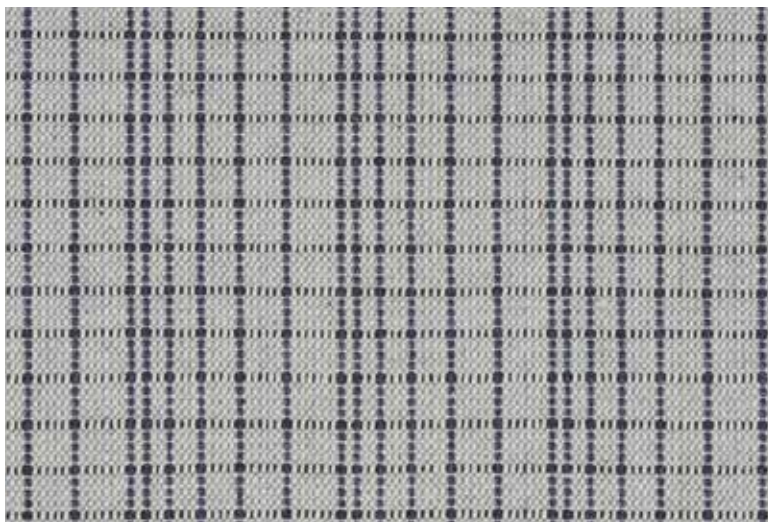
4.33"W x 0.98"L



Residential



ISLAND GRID | COASTAL MIST



ISLAND GRID | BLUE LAGOON



SAND DUNE



KONA BLEND



SEA CLIFF

ISLAND

ISLAND STRIAE

CRAFTWORKS
BY *Nourison*



30% Wool
70% Polyester



Hand-Loomed



15' Width



Residential



ISLAND STRIAE | HARVEST



ISLAND STRIAE | STEEL BLUE



OATMEAL

HORIZON

MIDNIGHT

ISLAND

ISLAND STRIPE

CRAFTWORKS
BY *Nourison*



90% Wool
10% Polyester



Hand-Loomed



15' Width



0.98"L



Residential



ISLAND STRIPE | COASTAL MIST



ISLAND STRIPE | BLUE LAGOON



SAND DUNE



KONA BLEND



SEA CLIFF

ISLAND

ISLAND WAVE

CRAFTWORKS
BY Nourison



30% Wool
70% Polyester



Hand-Loomed



15' Width



1.77"W x 1.37"L



Residential



ISLAND WAVE | NATURAL



ISLAND WAVE | SKY



CELADON

STONE

GRANITE

PEWTER

DEEP BLUE

RADIANT STRIPE

CRAFTWORKS
BY *Nourison*



Wool/Polysilk



Hand-Loomed



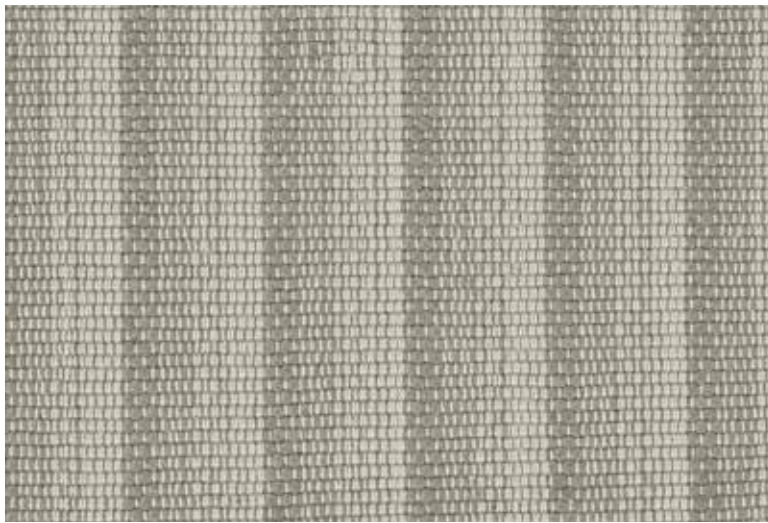
15' Width



2.25"W



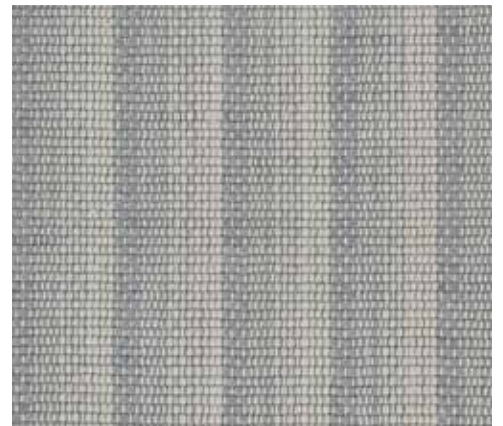
Residential



RADIANT STRIPE | TAUPE



RADIANT STRIPE | MARITIME



BATTLESHIP



ACAVE



MIDNIGHT

RAVISHING STRIPE

CRAFTWORKS
BY Nourison



Wool/Polysilk



Hand-Loomed



15' Width



2.25"W



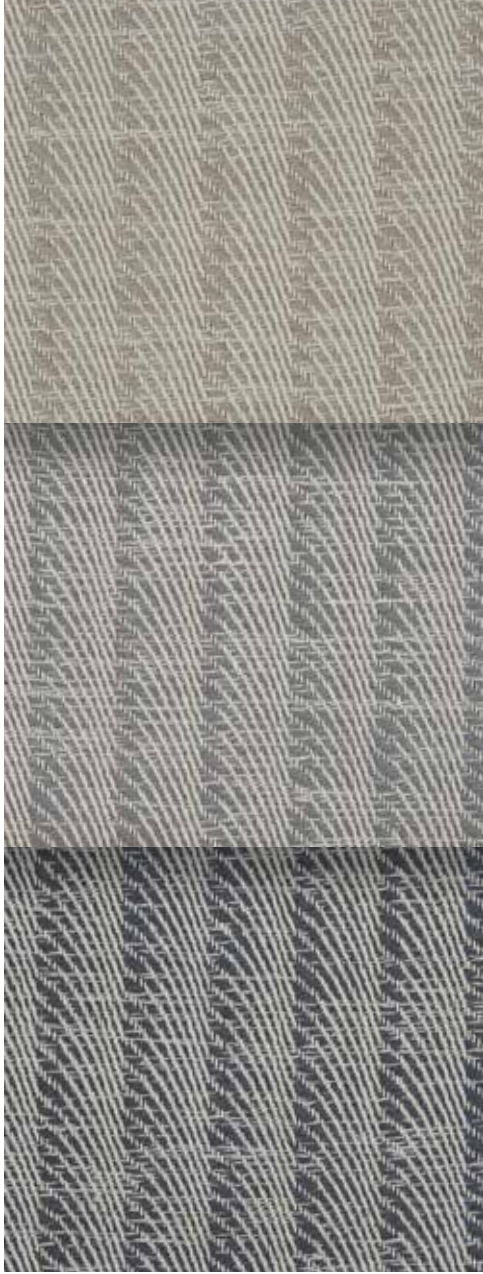
Residential



RAVISHING STRIPE | PEWTER



RAVISHING STRIPE | AGAVE



TAUPE

SLATE

MIDNIGHT

TERRAIN

CRAFTWORKS
BY Nourison



100% Wool



Hand Tufted



15' Width



Residential



TERRAIN | SAGEBRUSH



TERRAIN | LAKESIDE



STRAW



RAPIDS



MINERAL

VENTURA

CRAFTWORKS
BY Nourison



70% Wool
30% Polysilk



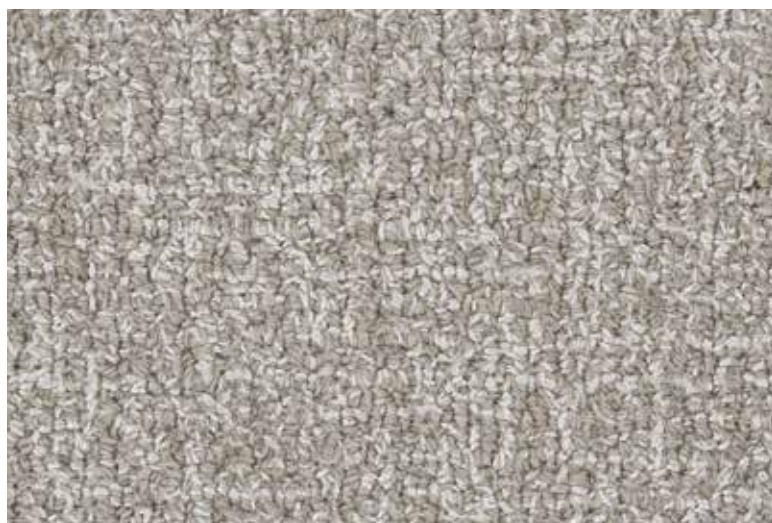
Hand Tufted



15' Width



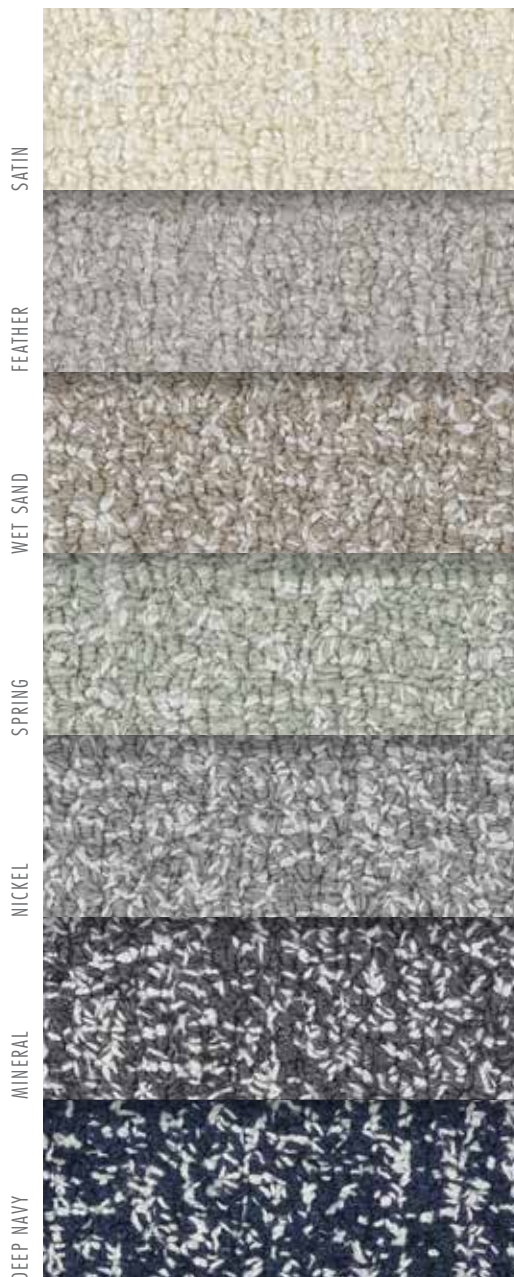
Residential -
Light Commercial



VENTURA | PAPHYRUS



VENTURA | SURF



WHEREVER

WHEREVER SISAL

CRAFTWORKS
BY *Nourison*



100% UV Stabilized
Polypropylene



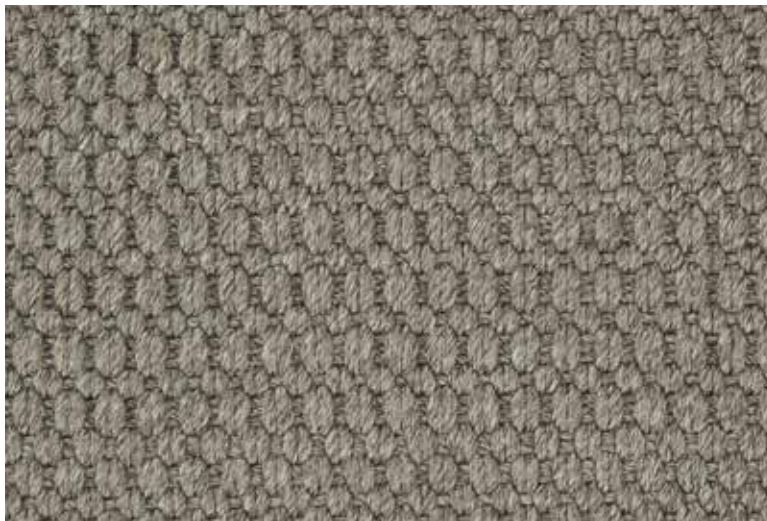
Machine Tufted



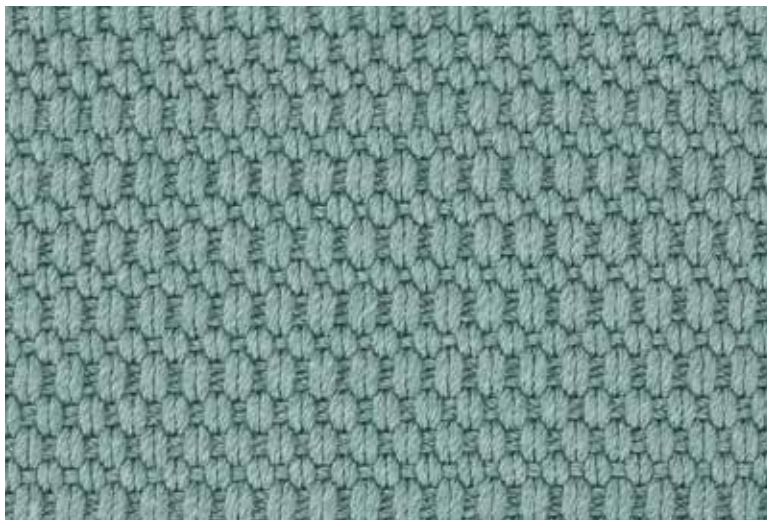
15' Width



Indoor-Outdoor
Residential



WHEREVER SISAL | HEATHER



WHEREVER SISAL | AQUA

DUNE

HARVEST

SKY

SPRUCE

DEEP BLUE





Nourison



STARLIGHT COLLECTION

STYLE: FRENETIC
PAGE: 21

OUR PICK



our favorite new
Nourison style

GRAND PARTERRE

KASHAN ELITE



100% NZ Wool



Woven



13'9" Width



41.2"W x 41.4"L



Residential -
Commercial



KASHAN ELITE | MIST



SHELL

DARK ROAST

GRAND PARTERRE

KASHAN ELITE RUNNERS



100% NZ Wool



Woven



30" & 41" Width



43.2" L



Residential -
Commercial



KASHAN ELITE 30" RUNNER | MIST



KASHAN ELITE 41" RUNNER | MIST



GRAND PARTERRE

KASHAN ELITE BORDERS



100% NZ Wool



Woven



12" Width



31.6" L



Residential -
Commercial



KASHAN ELITE | MIST

SHELL

DARK ROAST



ROCKVILLE



100% NZ Wool



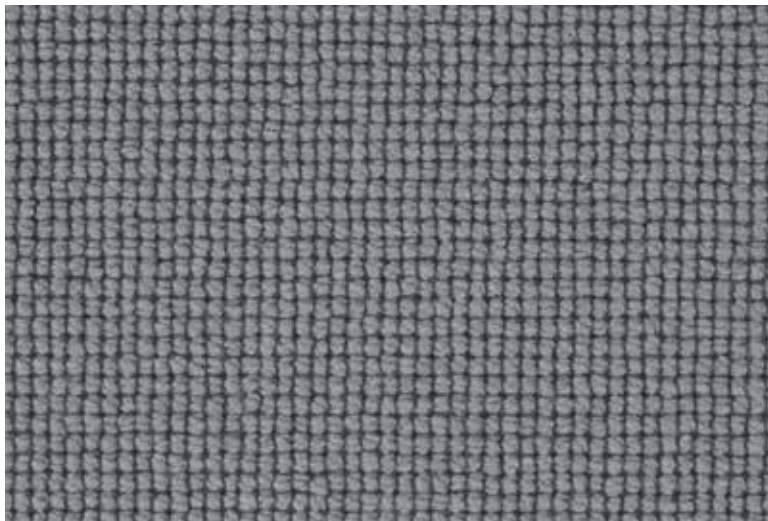
Machine Tufted



13'2" Width



Residential -
Light Commercial



ROCKVILLE | ASH BLUE



ROCKVILLE | PALE GREY

ECRU

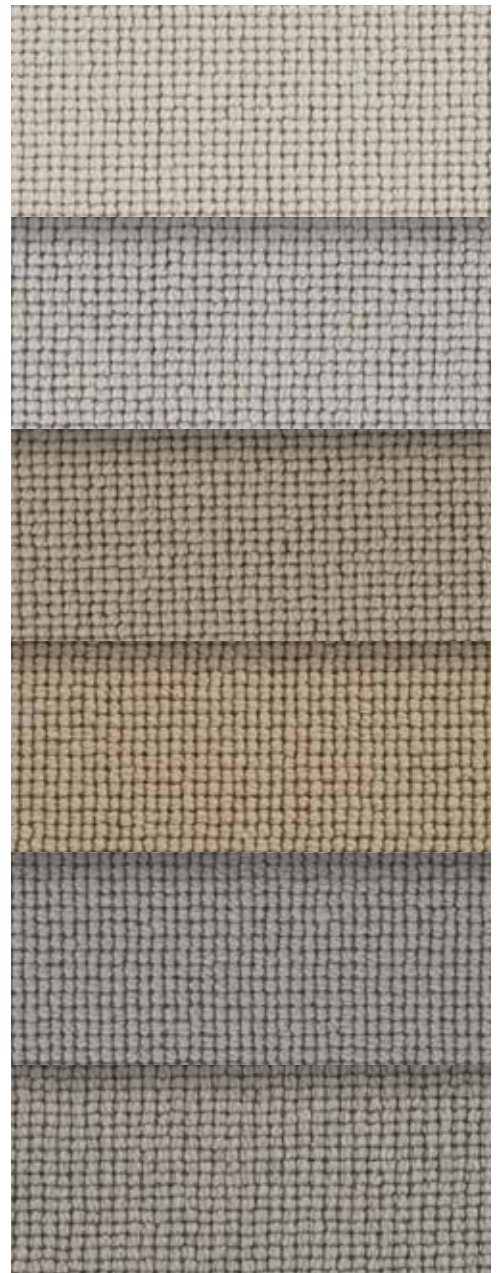
SILHOUETTE

SHALESTONE

HARVEST

CANYON

POTTERY



STARLIGHT

FRENETIC



70% Wool
30% Luxcelle™ Plus



Woven



13' Width



Residential



FRENETIC | STERLING



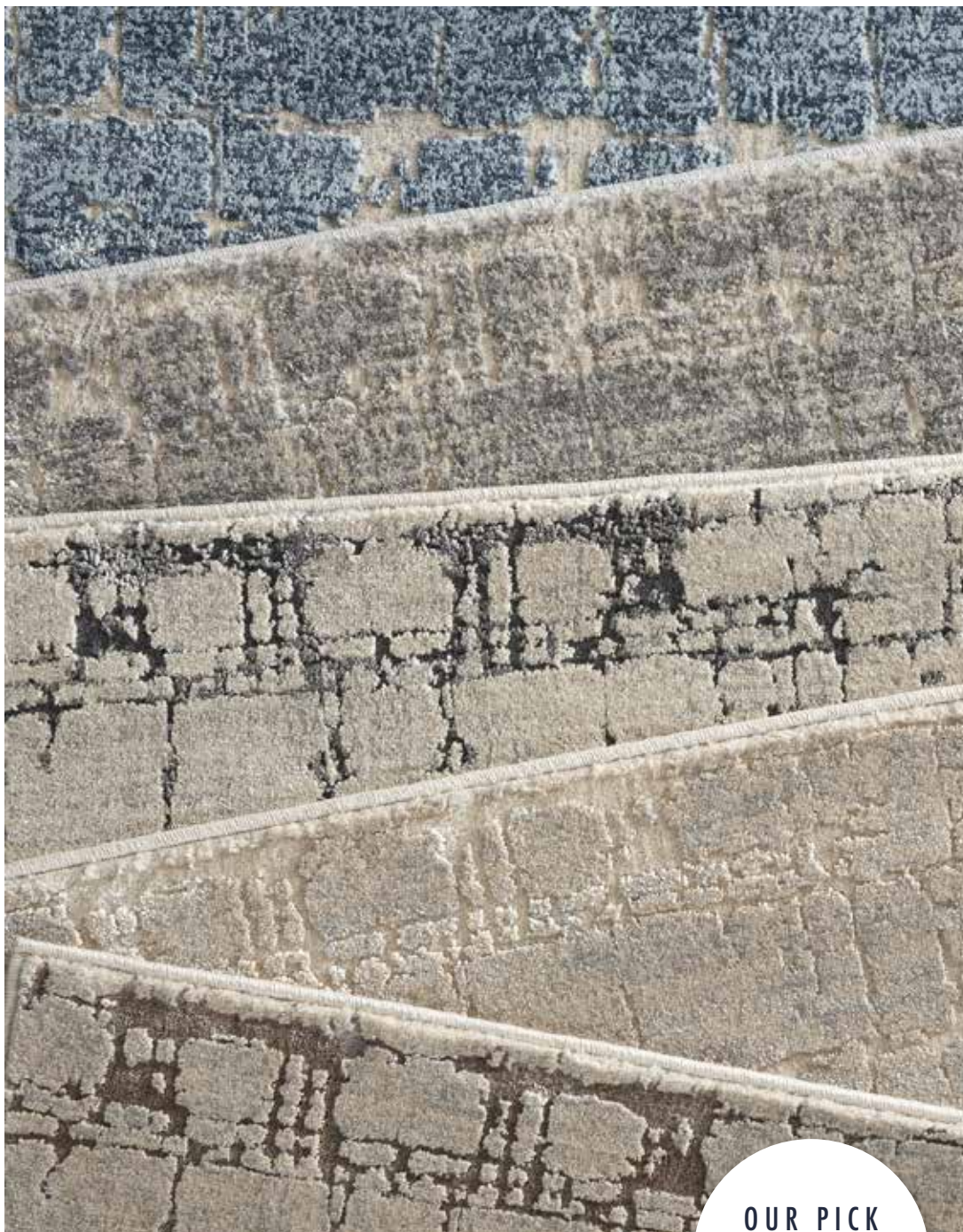
MOON SKY

GRAPHITE

BLACKLIGHT

Nourtex

A DIVISION OF NOURISON



TIDAL COLLECTION

STYLE: EBB TIDE
PAGE: 30

OUR PICK



our favorite new
Nourtex style

ESTATE 2

BILINGTON 2



100% NZ Wool



Woven



13' 9" Width



18.37"L x 23.9"W



Residential -
Commercial



BILINGTON 2 | QUARTZ



BILINGTON 2 | RUSSET



IVORY

GRANITE

NIGHTFALL

ESTATE 2

BILINGTON 2 RUNNERS



100% NZ Wool



Woven



30" & 36" Width



23.9" L



Residential -
Commercial



BILINGTON 2 30" RUNNER | QUARTZ



BILINGTON 2 36" RUNNER | QUARTZ



IVORY

GRANITE

RUSSET

NIGHTFALL

ESTATE 2

BILINGTON 2 BORDERS



100% NZ Wool



Woven



9" Width



23.9" L



Residential -
Commercial



BILINGTON 2 | QUARTZ



IVORY

GRANITE

RUSSET

NIGHTFALL

ESTATE 2

SAGAMORE 2



100% NZ Wool



Woven



13' 9" Width



41.2"W x 33.5"L



Residential -
Commercial



SAGAMORE 2 | BLUE



SAGAMORE 2 | GRANITE



IVORY



BORDEAUX

NIGHTFALL

ESTATE 2

SAGAMORE 2 RUNNERS



100% NZ Wool



Woven



30" & 36" Width



33.5" L



Residential -
Commercial



SAGAMORE 2 30" RUNNER | QUARTZ



SAGAMORE 2 36" RUNNER | QUARTZ



IVORY

GRANITE

BORDEAUX

NIGHTFALL

ESTATE 2

SAGAMORE 2 BORDERS



100% NZ Wool



Woven



9" Width



33.5"L



Residential -
Commercial



BILLINGTON 2 | QUARTZ

IVORY



GRANITE



BORDEAUX



NIGHTFALL



PACIFIC

PACIFIC STRIPE



50% Wool
50% Polypropylene



Machine Tufted



12' Width



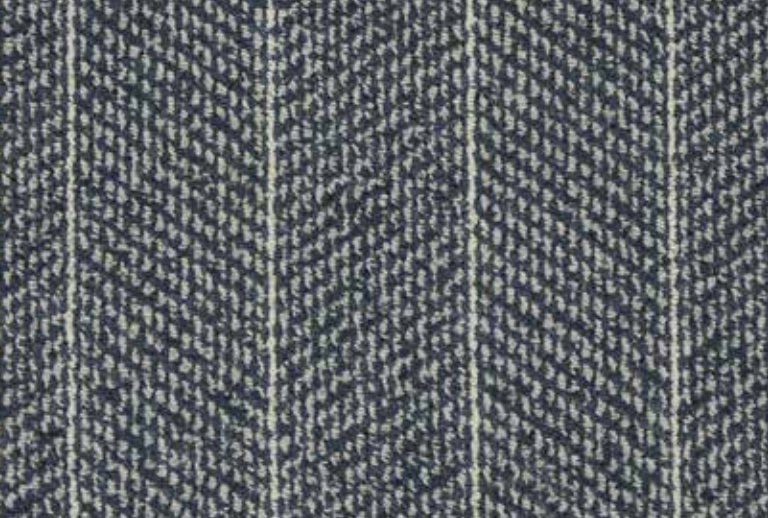
8"W x 0.05"L



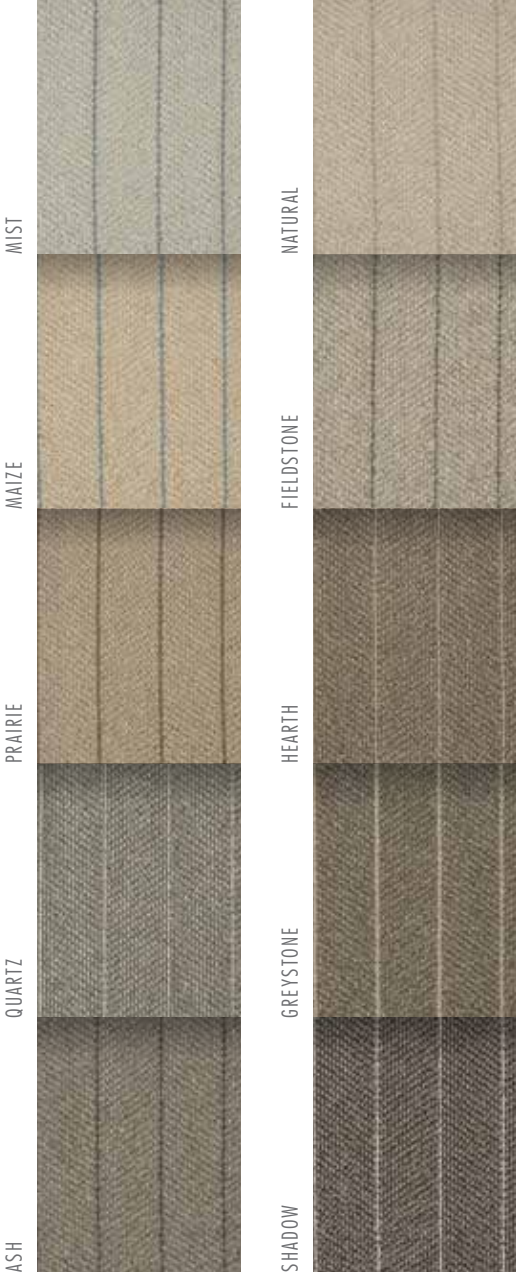
Residential -
Commercial



PACIFIC STRIPE | SURF



PACIFIC STRIPE | MARINA



TIDAL

EBB TIDE



Polypropylene
Polyester



Woven



13' 2" Width



39.3"W x 39.3"L



Residential



EBB TIDE | BULKHEAD



EBB TIDE | DEEPWATER



SHELL



SEACLIFF



SEA STORM

TIDAL

TIDAL SURGE



Polypropylene
Polyester



Woven



13' 2" Width



39.3" W x 39.3" L



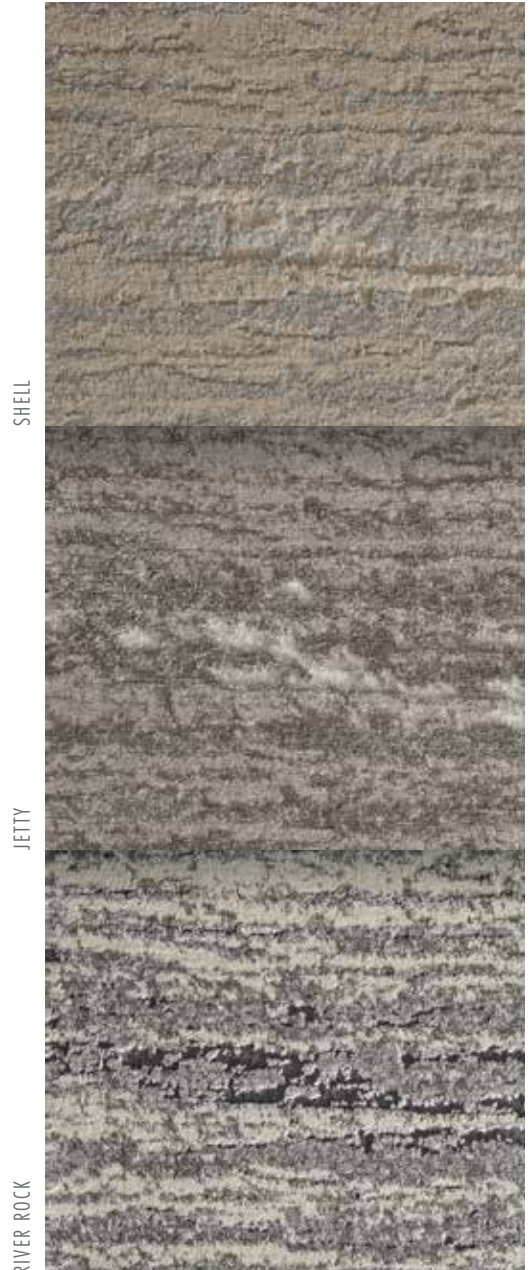
Residential



TIDAL SURGE | BLUFF



TIDAL SURGE | DEEPWATER



SHELL

JETTY

RIVER ROCK



VISIT US AT THE NEW NOURISON.COM

